

Adám Jenő.

Bőgő.

"Pulipán."  
(Népdal szvit.)

No. 1.

Allegro mod.to.

$\text{♩} = \frac{2}{4}$

Handwritten musical notation on a single staff, starting with a bass clef. It contains several measures with notes and rests, including a double bar line.

Handwritten musical notation on a single staff. It includes a dynamic marking *arco* above a series of notes, followed by a fortissimo *ff* marking and a fermata.

Handwritten musical notation on a single staff, featuring a series of notes with a slur underneath.

Handwritten musical notation on a single staff. It includes a circled marking *rit.* and a boxed number **5** above a measure.

Handwritten musical notation on a single staff, showing a sequence of notes with various accidentals.

Handwritten musical notation on a single staff. It includes a boxed number **6** and a marking *rit.* above a measure.

Handwritten musical notation on a single staff, continuing the sequence of notes.

Handwritten musical notation on a single staff, ending with a double bar line.

Handwritten musical notation on a single staff. It includes a boxed number **7** and a marking *arco* above a measure.

Handwritten musical notation on a single staff. It includes a marking *rit.* and a double bar line at the end.

*rit. simp.*

8

*f* *atempo*

*Andante.*

*No. 3.*

-h-

7

Handwritten musical notation on a single staff, featuring a treble clef, a key signature of one sharp (F#), and a common time signature (C). The notation includes a whole rest, followed by a quarter note, a half note, and a quarter note, with a slur over the last two notes.

Handwritten musical notation on a single staff, starting with a boxed measure number '12'. It includes a treble clef, a key signature of one sharp, and a common time signature. The notation features a quarter note, a half note, and a quarter note, with a slur over the last two notes. Dynamic markings 'pp' and 'p' are present.

*Andante sosten.*

Handwritten musical notation on a single staff, starting with a treble clef, a key signature of one sharp, and a common time signature. It includes a double bar line with repeat dots, followed by a quarter note, a half note, and a quarter note.

Handwritten musical notation on a single staff, featuring a treble clef, a key signature of one sharp, and a common time signature. The notation includes a quarter note, a half note, and a quarter note, with a slur over the last two notes.

Handwritten musical notation on a single staff, starting with a boxed measure number '13'. It includes a treble clef, a key signature of one sharp, and a 4/4 time signature. The notation features a quarter note, a half note, and a quarter note, with a double bar line and repeat dots. Dynamic markings 'mf' and 'p' are present.

Handwritten musical notation on a single staff, featuring a treble clef, a key signature of one sharp, and a 2/4 time signature. The notation includes a quarter note, a half note, and a quarter note, with a double bar line and repeat dots.

Handwritten musical notation on a single staff, starting with a boxed measure number '14'. It includes a treble clef, a key signature of one sharp, and a 4/4 time signature. The notation features a quarter note, a half note, and a quarter note, with a double bar line and repeat dots. Dynamic markings 'p' and 'p' are present.

Handwritten musical notation on a single staff, featuring a treble clef, a key signature of one sharp, and a common time signature. The notation includes a quarter note, a half note, and a quarter note, with a slur over the last two notes.

Handwritten musical notation on a single staff, starting with a boxed measure number '15'. It includes a treble clef, a key signature of one sharp, and a 2/4 time signature. The notation features a quarter note, a half note, and a quarter note, with a double bar line and repeat dots. Dynamic markings 'f' and 'f' are present.

Handwritten musical notation on a single staff, featuring a treble clef, a key signature of one sharp, and a common time signature. The notation includes a quarter note, a half note, and a quarter note, with a slur over the last two notes. Dynamic markings 'p' and 'p' are present. The word 'Forte' is written above the staff.

Handwritten musical notation on a single staff. It begins with a treble clef, a key signature of two flats (B-flat and E-flat), and a common time signature. The notation includes a quarter rest, a quarter note, and a half note. A measure rest is indicated by a horizontal line with a vertical bar. A fermata is placed over a note. The tempo marking "poco rall." is written below the staff. A box containing the number "16" is positioned above the staff, with a large handwritten "9" below it. The tempo changes to "Allegro." above the staff. The notation continues with a series of sixteenth notes.

Handwritten musical notation on a single staff. It features a treble clef, a key signature of two flats, and a common time signature. The notation consists of a series of sixteenth notes, followed by a measure rest, and then a sequence of notes including a quarter note, a half note, and a quarter note with a fermata. The piece concludes with a double bar line.

Clarinet No. 5.

Handwritten musical notation on a single staff. It starts with a treble clef, a key signature of two flats, and a common time signature. The notation includes a quarter note, a quarter note with a fermata, and a quarter note. A measure rest is indicated. The tempo changes to 2/4, then 3/4, then 2/4, and finally 3/4. The notation includes notes with flats and a half note.

Handwritten musical notation on a single staff. It begins with a treble clef, a key signature of two flats, and a 4/4 time signature. The notation includes a quarter note, a quarter note, a quarter note, and a half note. A measure rest is indicated. The tempo changes to 3/4. The notation includes notes with flats and a half note.

Handwritten musical notation on a single staff. It starts with a treble clef, a key signature of two flats, and a 2/4 time signature. The notation includes a quarter note, a quarter note, a quarter note, and a quarter note. A measure rest is indicated. The tempo changes to 3/4, then 2/4, then 3/4. The notation includes notes with flats and a half note.

Handwritten musical notation on a single staff. It begins with a treble clef, a key signature of two flats, and a 2/4 time signature. The notation includes a quarter note, a quarter note, and a quarter note. A measure rest is indicated. The tempo changes to 4/4. The notation includes notes with flats and a half note. The tempo marking "acc. pass." is written above the staff, and "accel." is written below it.

Handwritten musical notation on a single staff. It starts with a treble clef, a key signature of two flats, and a 3/4 time signature. The notation includes a quarter note, a quarter note, and a quarter note. A measure rest is indicated. The tempo changes to 4/4. The notation includes notes with flats and a half note. The tempo marking "riten." is written below the staff. A box containing the number "21" is positioned above the staff.

Four empty musical staves with a diagonal line drawn across them from the bottom left to the top right.

21

23 *And.te* no 6.

*a tempo.*

24

25 no 7. *And.te sosten.*

26 *8.* 27 *pizz.*  
 Bass clef, key signature of two flats. Measure 26 contains a double bar line with an '8.' above it. Measure 27 begins with a forte 'f' dynamic and a 'pizz.' (pizzicato) instruction. The notation shows a half note followed by two quarter notes.

*arco*  
 Continuation of the musical line with a half note followed by two quarter notes. An 'arco' instruction is written above the staff.

28 *fff*  
 Measure 28 begins with a half note followed by two quarter notes. A fortissimo 'fff' dynamic is written above the staff.

5. *arco* 10.  
 Measure 5 contains a double bar line. Measure 10 contains a double bar line. An 'arco' instruction is written below the staff between measures 5 and 10.

30 *pizz.*  
 Measure 30 begins with a mezzo-piano 'mp' dynamic and a 'pizz.' instruction. The notation shows a half note followed by two quarter notes.

Continuation of the musical line with a half note followed by two quarter notes.

31  
 Measure 31 begins with a half note followed by two quarter notes. The notation shows a half note followed by two quarter notes.

Continuation of the musical line with a half note followed by two quarter notes.

32  
 Measure 32 begins with a half note followed by two quarter notes. The notation shows a half note followed by two quarter notes.

Empty musical staves at the bottom of the page.

1

32

*ff* *ben marcato.*

33

*ff* *And te sosten.*

8. 3h 4.

6/4 4/4 6/4 4/4

35 (sello solo) 8. *No. 10. Allegretto.*

2/4 4/4

Fine 36





h1 8 No 12

h1

4

sf

No 13

h2

*Allegro*

*mf*

*rit*

*f*

*an*

*arco*

h3

*Ad larg*

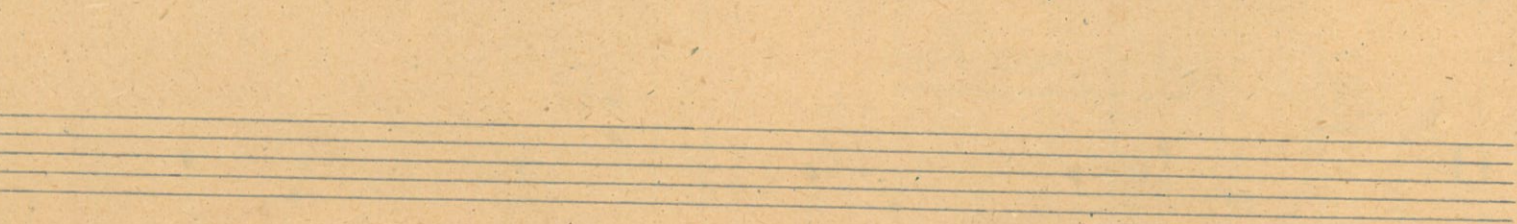
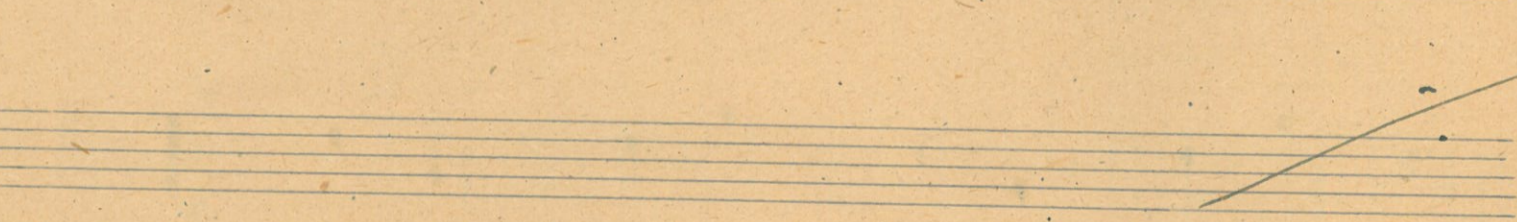
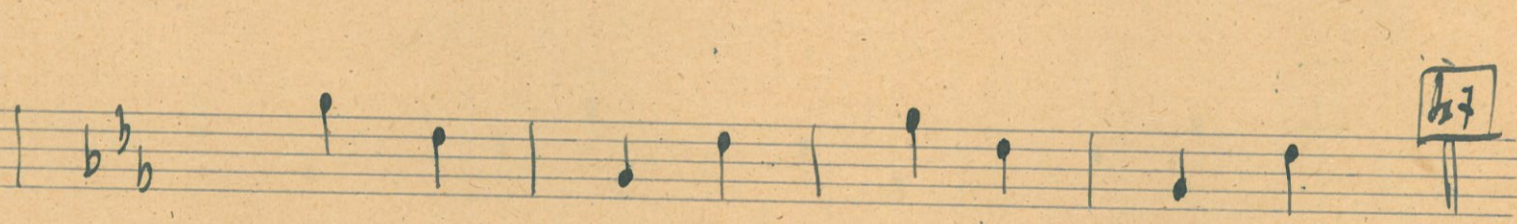
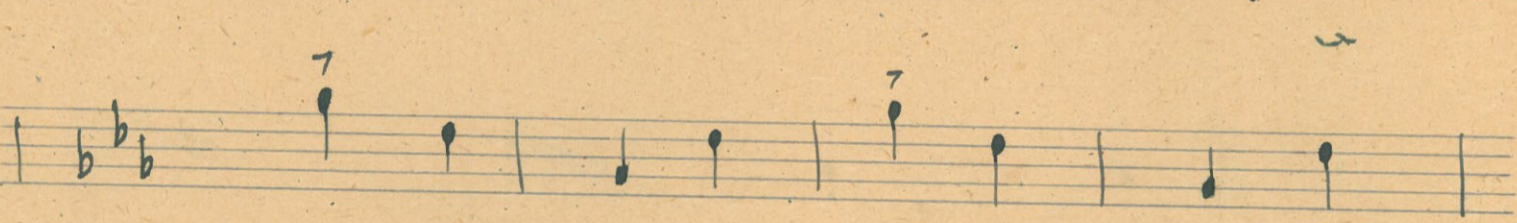
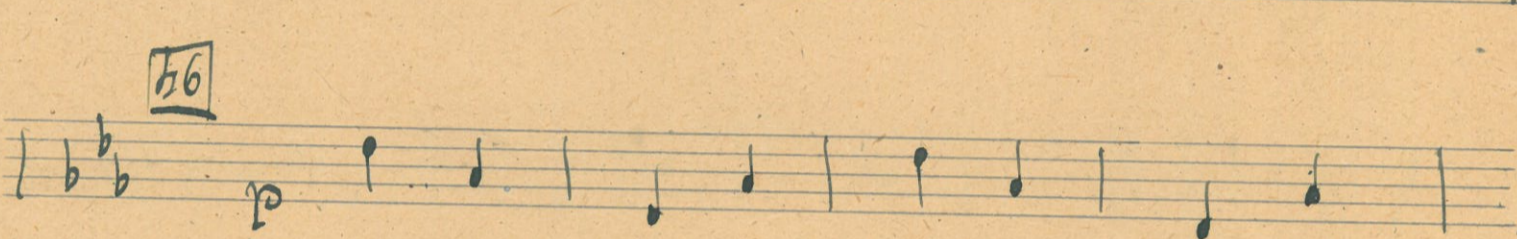
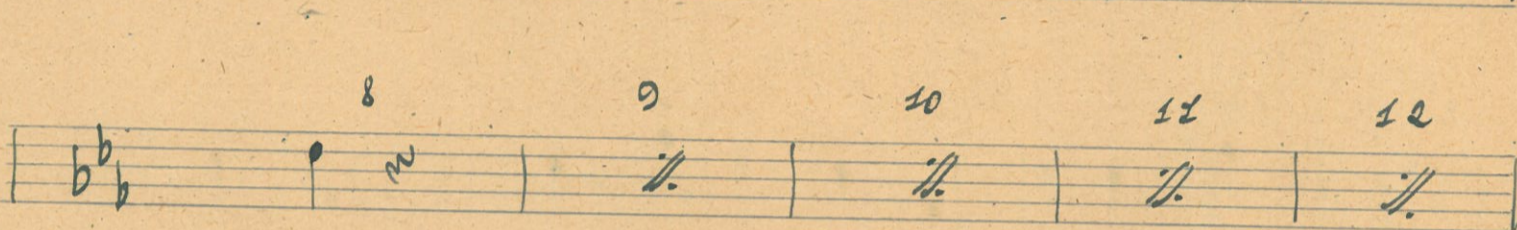
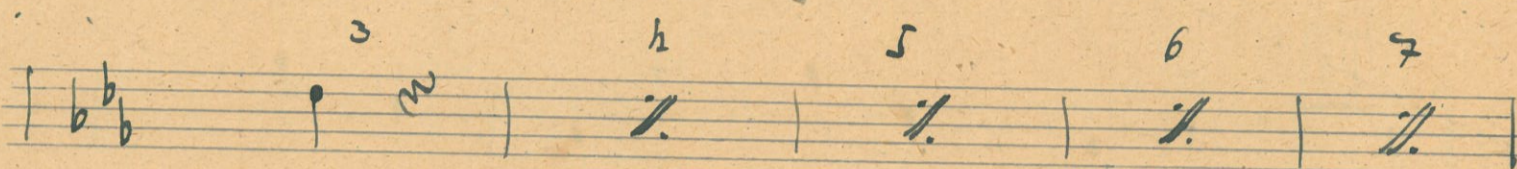
*rit*

*poco*

h4

*allarg.*

*ritpo*



*gyorsabban.*

47 *mf*

48

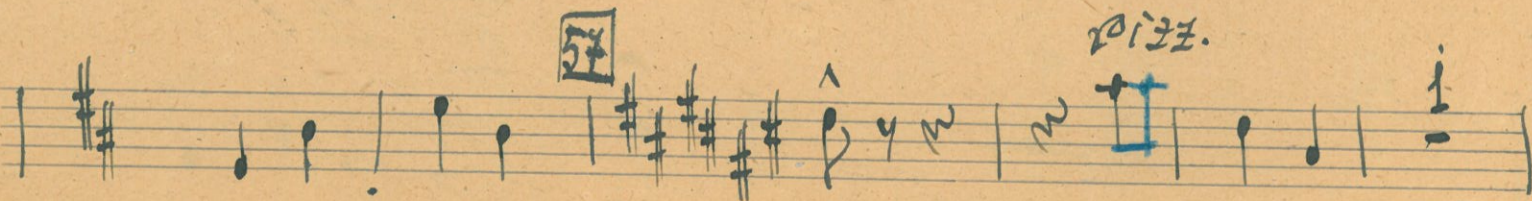
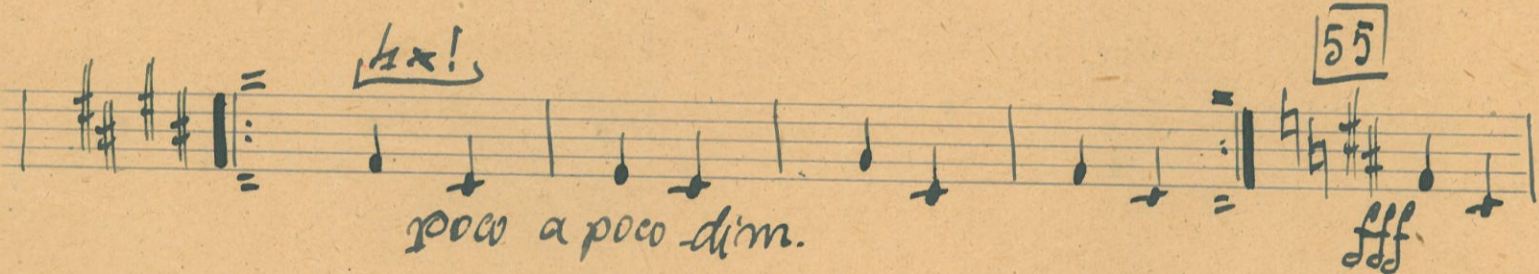
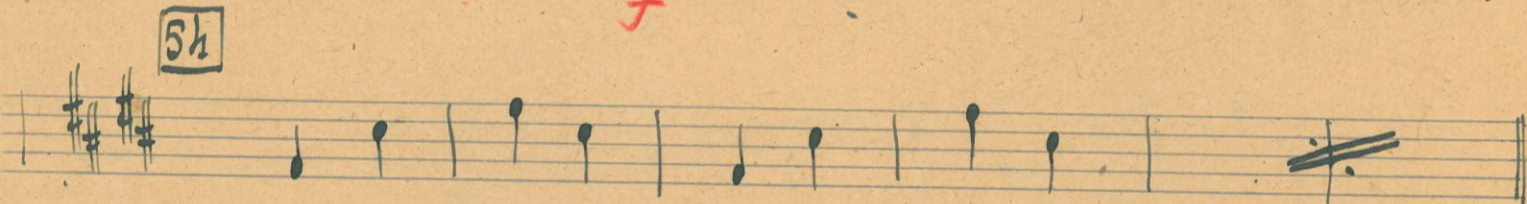
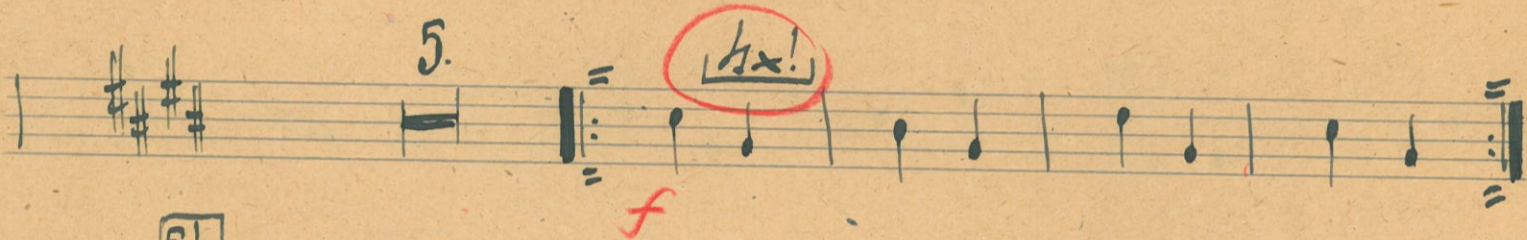
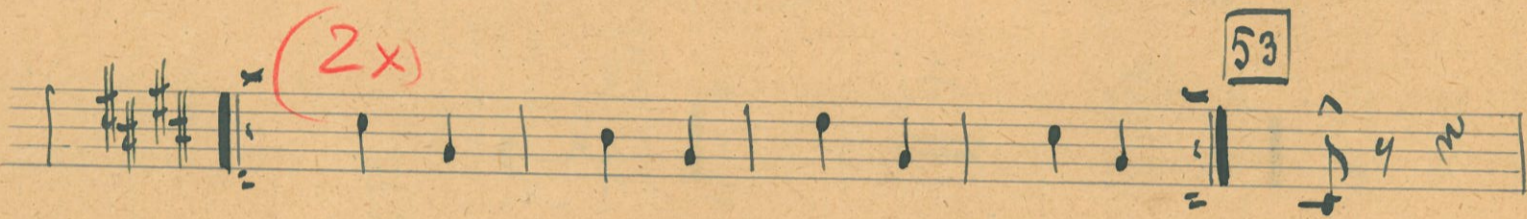
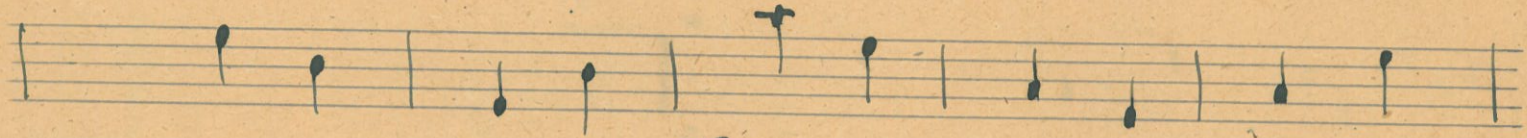
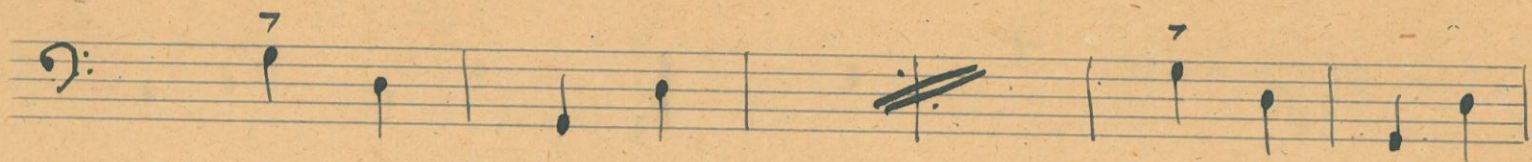
*Pizz*

3. 49

50

*Meg gyorsabban.*

51 *ff*



Handwritten musical notation on a single staff. It begins with a treble clef and a key signature of three sharps (F#, C#, G#). The notation includes a fermata over a note, followed by a double bar line and a repeat sign. Above the repeat sign is the handwritten annotation "2x presto." in red ink.

Handwritten musical notation on a single staff. It features a treble clef and a key signature of three sharps. A boxed measure number "58" is present. The notation includes a fermata and a double bar line. Below the staff, the handwritten word "fina" is visible.

Handwritten musical notation on a single staff. It features a treble clef and a key signature of three sharps. The notation consists of a series of notes connected by a slur.

Handwritten musical notation on a single staff. It features a treble clef and a key signature of three sharps. A boxed measure number "59" is present. Above the staff, there are handwritten annotations "2x!" and "4x 4." in red ink. Below the staff, the word "Presto." is written in red ink.

Handwritten musical notation on a single staff. It features a treble clef and a key signature of three sharps. The notation includes notes with accents and a double bar line.

Handwritten musical notation on a single staff. It features a treble clef and a key signature of three sharps. The notation includes notes with accents.

Handwritten musical notation on a single staff. It features a treble clef and a key signature of three sharps. The notation includes notes with accents.

Handwritten musical notation on a single staff. It features a treble clef and a key signature of three sharps. A boxed measure number "60" is present. The notation includes notes with accents and slurs. A blue bracket is drawn over the final measure, which contains a boxed measure number "6". Below the staff, the word "allarg." is written.

Handwritten musical notation on a single staff. It features a treble clef and a key signature of three sharps. A boxed measure number "61" is present. Above the staff, the word "Andante." is written. The notation includes notes with accents and slurs.

Handwritten musical notation on a single staff. It features a treble clef and a key signature of three sharps. A boxed measure number "62" is present. Above the staff, the words "Violin 5. solo" and "Cadenza" are written in blue ink. The notation includes a double bar line and a change of time signature to 4/4. A boxed measure number "63" is present. Above the staff, the word "Veloce." is written. The notation includes notes with accents and slurs.

